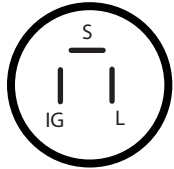


Nippon-Denso

Toyota, Fuel Injection

F540HD Reg.

Diagram # 7010



FROM ORIGINAL ALTERNATOR HARNESS

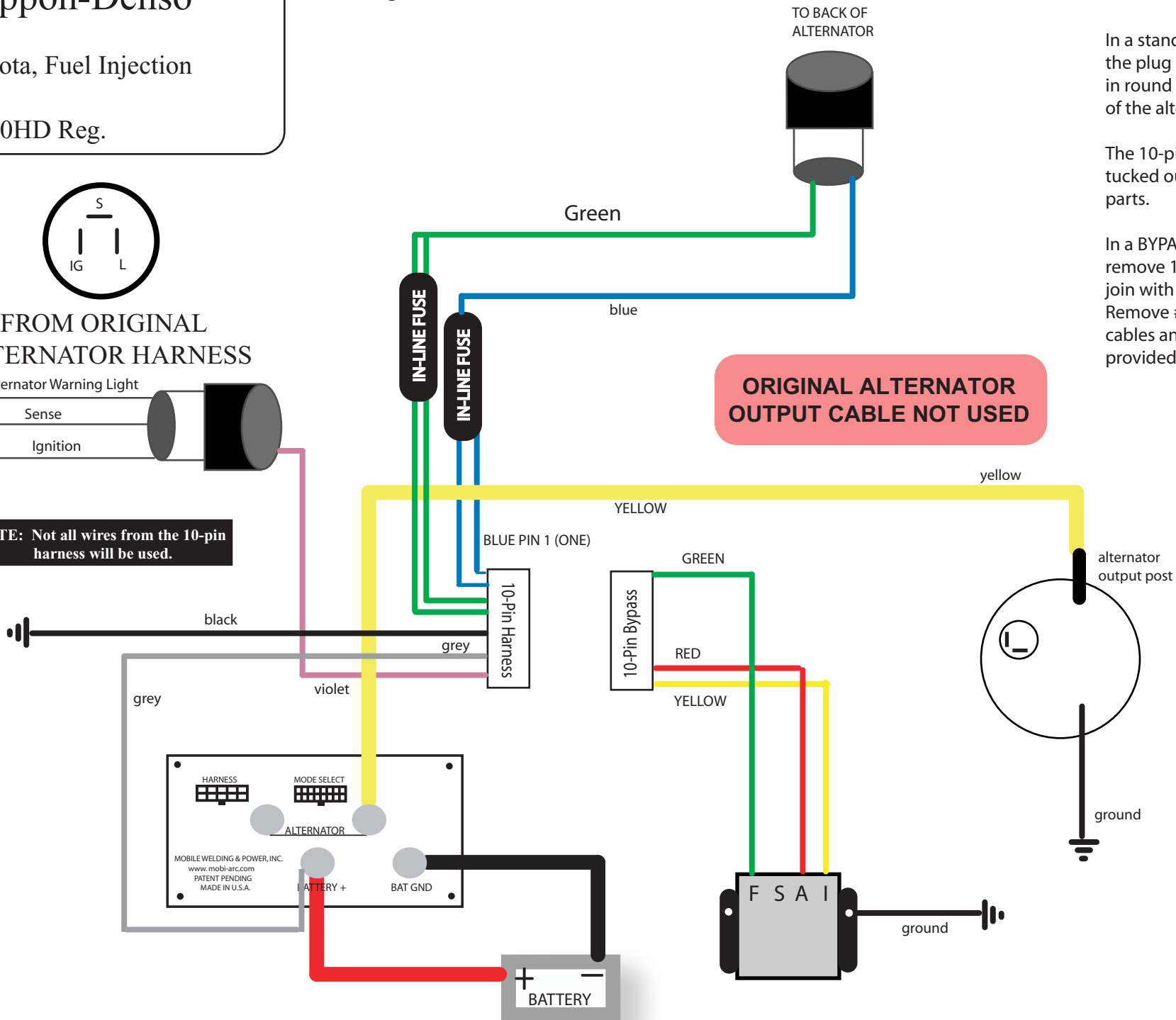
Alternator Warning Light

Sense

Ignition

NOTE: Not all wires from the 10-pin harness will be used.

ORIGINAL ALTERNATOR OUTPUT CABLE NOT USED



In a standard configuration, the plug will be inserted in round receptacle on the back of the alternator.

The 10-pin BYPASS plug will get tucked out of the way of moving parts.

In a BYPASS configuration, remove 10-pin harness plug and join with 10-pin BYPASS plug. Remove #4 red & yellow cables and join together on bolt provided in BYPASS Kit.